



# Monitoring and Evaluation

## OVERVIEW

### Brief description

This toolkit deals with the “nuts and bolts” (the basics) of setting up and using a monitoring and evaluation system for a project or an organisation. It clarifies what monitoring and evaluation are, how you plan to do them, how you design a system that helps you monitor and an evaluation process that brings it all together usefully. It looks at how you collect the information you need and then how you save yourself from drowning in data by analysing the information in a relatively straightforward way. Finally it raises, and attempts to address, some of the issues to do with taking action on the basis of what you have learned.

### Why have a detailed toolkit on monitoring and evaluation?

If you don't care about how well you are doing or about what impact you are having, why bother to do it at all? Monitoring and evaluation enable you to assess the quality and impact of your work, against your action plans and your strategic plan. In order for monitoring and evaluation to be really valuable, you do need to have planned well. Planning is dealt with in detail in other toolkits on this website.

### Who should use this toolkit?

This toolkit should be useful to anyone working in an organisation or project who is concerned about the efficiency, effectiveness and impact of the work of the project or organisation.

### When will this toolkit be useful?

This toolkit will be useful when:

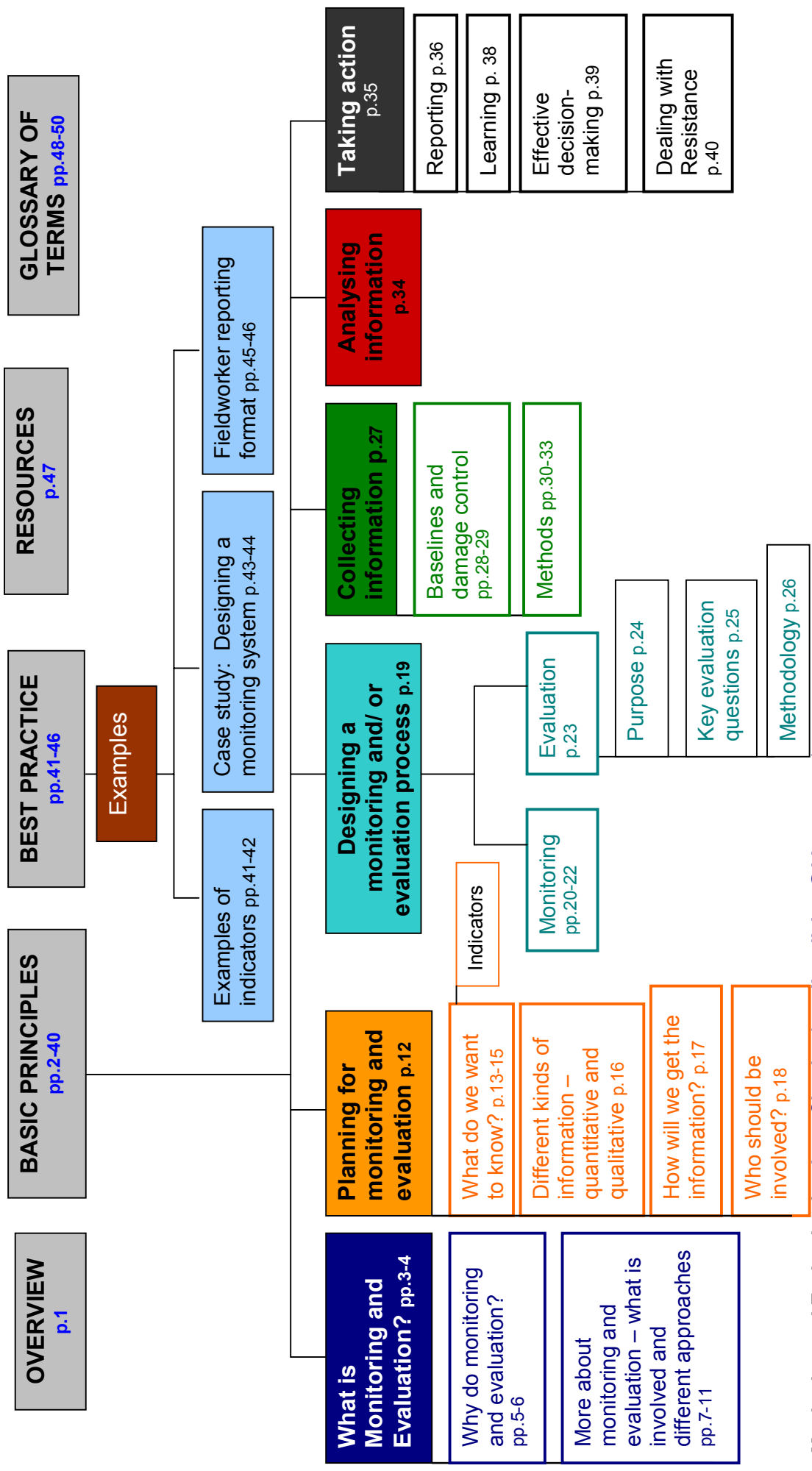
- You are setting up systems for data collection during the planning phases of a project or organisation;
- You want to analyse data collected through the monitoring process;
- You are concerned about how efficiently and how effectively you are working;
- You reach a stage in your project, or in the life of your organisation, when you think it would be useful to evaluate what impact the work is having;
- Donors ask for an external evaluation of your organisation and or work.

Although there is a tendency in civil society organisations to see an evaluation as something that happens when a donor insists on it, in fact, monitoring and evaluation are invaluable internal management tools. If you don't assess how well you are doing against targets and indicators, you may go on using resources to no useful end, without changing the situation you have identified as a problem at all. Monitoring and evaluation enable you to make that assessment.



**CIVICUS**  
World Alliance for Citizen Participation

# Monitoring and Evaluation



# Monitoring and Evaluation

## BASIC PRINCIPLES

### What is monitoring and evaluation?

Although the term “monitoring and evaluation” tends to get run together as if it is only one thing, monitoring and evaluation are, in fact, two distinct sets of organisational activities, related but not identical.

**Monitoring** is the systematic collection and analysis of information as a project progresses. It is aimed at improving the efficiency and effectiveness of a project or organisation. It is based on targets set and activities planned during the planning phases of work. It helps to keep the work on track, and can let management know when things are going wrong. If done properly, it is an invaluable tool for good management, and it provides a useful base for evaluation. It enables you to determine whether the resources you have available are sufficient and are being well used, whether the capacity you have is sufficient and appropriate, and whether you are doing what you planned to do (see also the toolkit on action planning).

**Evaluation** is the comparison of actual project impacts against the agreed strategic plans. It looks at what you set out to do, at what you have accomplished, and how you accomplished it. It can be **formative** (taking place during the life of a project or organisation, with the intention of improving the strategy or way of functioning of the project or organisation). It can also be **summative** (drawing learnings from a completed project or an organisation that is no longer functioning). Someone once described this as the difference between a check-up and an autopsy!

What monitoring and evaluation have in common is that they are geared towards learning from what you are doing and how you are doing it, by focusing on:

- Efficiency
- Effectiveness
- Impact

**Efficiency** tells you that the input into the work is appropriate in terms of the output. This could be input in terms of money, time, staff, equipment and so on. When you run a project and are concerned about its replicability or about going to scale (see Glossary of Terms), then it is very important to get the efficiency element right.

**Effectiveness** is a measure of the extent to which a development programme or project achieves the specific objectives it set. If, for example, we set out to improve the qualifications of all the high school teachers in a particular area, did we succeed?

**Impact** tells you whether or not what you did made a difference to the problem situation you were trying to address. In other words, was your strategy useful? Did ensuring that teachers were better qualified improve the pass rate in the final year of school? Before you decide to get bigger, or to replicate the project elsewhere, you need to be sure that what you are doing makes sense in terms of the impact you want to achieve.

From this it should be clear that monitoring and evaluation are best done when there has been proper planning against which to assess progress and achievements. There are three



# Monitoring and Evaluation

toolkits in this set that deal with planning – the overview of planning, strategic planning and action planning.

In this section we look in more detail at **why do monitoring and evaluation?** and **at more about monitoring and evaluation** and what they involve. This includes a discussion of different approaches to monitoring and evaluation and of what to think about when you use an external evaluator.



# Monitoring and Evaluation

## WHY DO MONITORING AND EVALUATION?

Monitoring and evaluation enable you to check the “bottom line” (see Glossary of Terms) of development work: Not “are we making a profit?” but “are we making a difference?” Through monitoring and evaluation, you can:

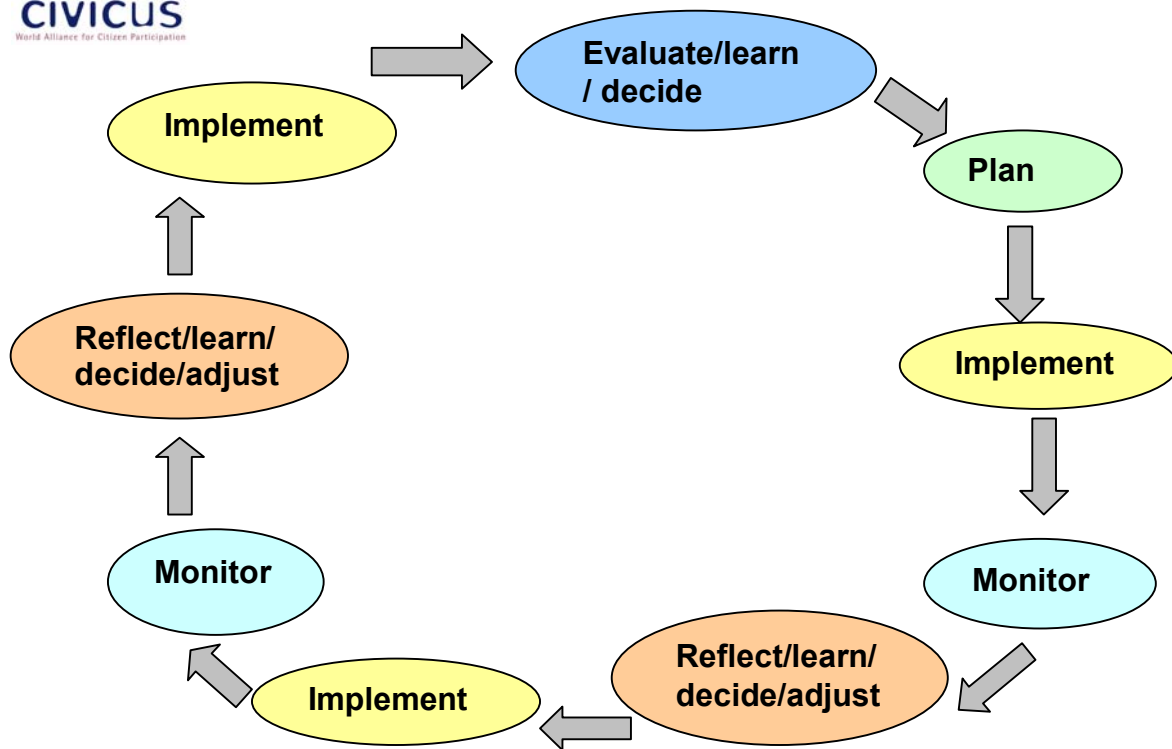
- Review progress;
- Identify problems in planning and/or implementation;
- Make adjustments so that you are more likely to “make a difference”.

In many organisations, “monitoring and evaluation” is something that is seen as a donor requirement rather than a management tool. Donors are certainly entitled to know whether their money is being properly spent, and whether it is being well spent. But the primary (most important) use of monitoring and evaluation should be for the organisation or project itself to see how it is doing against objectives, whether it is having an impact, whether it is working efficiently, and to learn how to do it better.

Plans are essential but they are not set in concrete (totally fixed). If they are not working, or if the circumstances change, then plans need to change too. Monitoring and evaluation are both tools which help a project or organisation know when plans are not working, and when circumstances have changed. They give management the information it needs to make decisions about the project or organisation, about changes that are necessary in strategy or plans. Through this, the constants remain the pillars of the strategic framework: the problem analysis, the vision, and the values of the project or organisation. Everything else is negotiable. (See also the toolkit on strategic planning) Getting something wrong is not a crime. Failing to learn from past mistakes because you are not monitoring and evaluating, is.

The effect of monitoring and evaluation can be seen in the following cycle. Note that you will monitor and adjust several times before you are ready to evaluate and replan.

## Monitoring and Evaluation



It is important to recognise that monitoring and evaluation are not magic wands that can be waved to make problems disappear, or to cure them, or to miraculously make changes without a lot of hard work being put in by the project or organisation. In themselves, they are not a solution, but they are valuable tools. Monitoring and evaluation can:

- Help you identify problems and their causes;
- Suggest possible solutions to problems;
- Raise questions about assumptions and strategy;
- Push you to reflect on where you are going and how you are getting there;
- Provide you with information and insight;
- Encourage you to act on the information and insight;
- Increase the likelihood that you will make a positive development difference.

# Monitoring and Evaluation

## MORE ABOUT MONITORING AND EVALUATION

### Monitoring involves:

- Establishing indicators (See Glossary of Terms) of efficiency, effectiveness and impact;
- Setting up systems to collect information relating to these indicators;
- Collecting and recording the information;
- Analysing the information;
- Using the information to inform day-to-day management.

Monitoring is an internal function in any project or organisation.

### Evaluation involves:

- Looking at what the project or organisation intended to achieve – what difference did it want to make? What impact did it want to make?
- Assessing its progress towards what it wanted to achieve, its impact targets.
- Looking at the strategy of the project or organisation. Did it have a strategy? Was it effective in following its strategy? Did the strategy work? If not, why not?
- Looking at how it worked. Was there an efficient use of resources? What were the opportunity costs (see Glossary of Terms) of the way it chose to work? How sustainable is the way in which the project or organisation works? What are the implications for the various stakeholders in the way the organisation works.

In an evaluation, we look at efficiency, effectiveness and impact (see Glossary of Terms).

There are many different ways of doing an evaluation. Some of the more common terms you may have come across are:

- **Self-evaluation:** This involves an organisation or project holding up a mirror to itself and assessing how it is doing, as a way of learning and improving practice. It takes a very self-reflective and honest organisation to do this effectively, but it can be an important learning experience.
- **Participatory evaluation:** This is a form of internal evaluation. The intention is to involve as many people with a direct stake in the work as possible. This may mean project staff and beneficiaries working together on the evaluation. If an outsider is called in, it is to act as a facilitator of the process, not an evaluator.
- **Rapid Participatory Appraisal:** Originally used in rural areas, the same methodology can, in fact, be applied in most communities. This is a qualitative (see Glossary of Terms) way of doing evaluations. It is semi-structured and carried out by an interdisciplinary team over a short time. It is used as a starting point for understanding a local situation and is a quick, cheap, useful way to gather information. It involves the use of secondary (see Glossary of Terms) data review, direct observation, semi-structured interviews, key informants, group interviews, games, diagrams, maps and calendars. In an evaluation context, it allows one to get valuable input from those who are supposed to be benefiting from the development work. It is flexible and interactive.
- **External evaluation:** This is an evaluation done by a carefully chosen outsider or outsider team.



# Monitoring and Evaluation

- **Interactive evaluation:** This involves a very active interaction between an outside evaluator or evaluation team and the organisation or project being evaluated. Sometimes an insider may be included in the evaluation team.

For more on the advantages and disadvantages of external and internal evaluations, go to the next page.

For more on selecting an external evaluator, go to Page 13.

For more on different approaches to evaluation, go to Page 14.

# Monitoring and Evaluation

**\* ADVANTAGES AND DISADVANTAGES OF INTERNAL AND EXTERNAL EVALUATIONS**

	Advantages	Disadvantages
<b>Internal evaluation</b>	<p>The evaluators are very familiar with the work, the organisational culture and the aims and objectives.</p> <p>Sometimes people are more willing to speak to insiders than to outsiders.</p> <p>An internal evaluation is very clearly a management tool, a way of self-correcting, and much less threatening than an external evaluation. This may make it easier for those involved to accept findings and criticisms.</p> <p>An internal evaluation will cost less than an external evaluation.</p>	<p>The evaluation team may have a vested interest in reaching positive conclusions about the work or organisation. For this reason, other stakeholders, such as donors, may prefer an external evaluation.</p> <p>The team may not be specifically skilled or trained in evaluation.</p> <p>The evaluation will take up a considerable amount of organisational time – while it may cost less than an external evaluation, the opportunity costs (see Glossary of Terms) may be high.</p>
<b>External evaluation (done by a team or person with no vested interest in the project)</b>	<p>The evaluation is likely to be more objective as the evaluators will have some distance from the work.</p> <p>The evaluators should have a range of evaluation skills and experience.</p> <p>Sometimes people are more willing to speak to outsiders than to insiders.</p> <p>Using an outside evaluator gives greater credibility to findings, particularly positive findings.</p>	<p>Someone from outside the organisation or project may not understand the culture or even what the work is trying to achieve.</p> <p>Those directly involved may feel threatened by outsiders and be less likely to talk openly and co-operate in the process.</p> <p>External evaluation can be very costly.</p> <p>An external evaluator may misunderstand what you want from the evaluation and not give you what you need.</p>

If you decide to go for external evaluation, you will find some ideas for criteria to use in choosing an external evaluator on the next page.

# Monitoring and Evaluation

## \* SELECTING AN EXTERNAL EVALUATOR OR EVALUATION TEAM

Qualities to look for in an external evaluator or evaluation team:

- An understanding of development issues.
- An understanding of organisational issues.
- Experience in evaluating development projects, programmes or organisations.
- A good track record with previous clients.
- Research skills.
- A commitment to quality.
- A commitment to deadlines.
- Objectivity, honesty and fairness.
- Logic and the ability to operate systematically.
- Ability to communicate verbally and in writing.
- A style and approach that fits with your organisation.
- Values that are compatible with those of the organisation.
- Reasonable rates (fees), measured against the going rates.

How do you find all this out? By asking lots of questions!

When you decide to use an external evaluator:

- Check his/her/their references.
- Meet with the evaluators before making a final decision.
- Communicate what you want clearly – good Terms of Reference (see Glossary of Terms) are the foundation of a good contractual relationship.
- Negotiate a contract which makes provision for what will happen if time frames and output expectations are not met.
- Ask for a workplan with outputs and timelines.
- Maintain contact – ask for interim reports as part of the contract – either verbal or written.
- Build in formal feedback times.

Do not expect any evaluator to be completely objective. S/he will have opinions and ideas – you are not looking for someone who is a blank page! However, his/her opinions must be clearly stated as such, and must not be disguised as “facts”. It is also useful to have some idea of his/her (or their) approach to evaluation.

For more on different approaches to evaluation, go to the next page.

# Monitoring and Evaluation

## \* DIFFERENT APPROACHES TO EVALUATION

Approach	Major purpose	Typical focus questions	Likely methodology
Goal-based	Assessing achievement of goals and objectives.	Were the goals achieved? Efficiently? Were they the right goals?	Comparing baseline (see Glossary of Terms) and progress data (see Glossary of Terms); finding ways to measure indicators.
Decision-making	Providing information.	Is the project effective? Should it continue? How might it be modified?	Assessing range of options related to the project context, inputs, process, and product. Establishing some kind of decision-making consensus.
Goal-free	Assessing the full range of project effects, intended and unintended.	What are all the outcomes? What value do they have?	Independent determination of needs and standards to judge project worth. Qualitative and quantitative techniques to uncover any possible results.
Expert judgement	Use of expertise.	How does an outside professional rate this project?	Critical review based on experience, informal surveying, and subjective insights.

Our feeling is that the best evaluators use a combination of all these approaches, and that an organisation can ask for a particular emphasis but should not exclude findings that make use of a different approach.

(Thanks to PACT's *Evaluation Sourcebook*, 1984, for much of this.)

# Monitoring and Evaluation

## Planning for monitoring and evaluation

Monitoring and evaluation should be part of your planning process. It is very difficult to go back and set up monitoring and evaluation systems once things have begun to happen. You need to begin gathering information about performance and in relation to targets from the word go. The first information gathering should, in fact, take place when you do your needs assessment (see the toolkit on overview of planning, the section on doing the ground work). This will give you the information you need against which to assess improvements over time.

When you do your planning process, you will set indicators (see Glossary of Terms). These indicators provide the framework for your monitoring and evaluation system. They tell you **what** you want to know and the kinds of information it will be useful to collect. In this section we look at:

- **What do we want to know?** This includes looking at indicators for both internal issues and external issues. (Also look at the examples of indicators later in this toolkit.)
- **Different kinds of information.**
- **How will we get information?**
- **Who should be involved?**

There is not one set way of planning for monitoring and evaluation. The ideas included in the toolkits on overview of planning, strategic planning and action planning will help you to develop a useful framework for your monitoring and evaluation system. If you are familiar with logical framework analysis and already use it in your planning, this approach lends itself well to planning a monitoring and evaluation system. (See also in the toolkit on overview of planning, the section on planning tools – overview, LFA.)

# Monitoring and Evaluation

## WHAT DO WE WANT TO KNOW?

***What we want to know is linked to what we think is important. In development work, what we think is important is linked to our values.***

Most work in civil society organisations is underpinned by a value framework. It is this framework that determines the standards of acceptability in the work we do. The central values on which most development work is built are:

- Serving the disadvantaged;
- Empowering the disadvantaged;
- Changing society, not just helping individuals;
- Sustainability;
- Efficient use of resources.

So, the first thing we need to know is: Is what we are doing and how we are doing it meeting the requirements of these values? In order to answer this question, our monitoring and evaluation system must give us information about:

- Who is benefiting from what we do? How much are they benefiting?
- Are beneficiaries passive recipients or does the process enable them to have some control over their lives?
- Are there lessons in what we are doing that have a broader impact than just what is happening on our project?
- Can what we are doing be sustained in some way for the long-term, or will the impact of our work cease when we leave?
- Are we getting optimum outputs for the least possible amount of inputs?

### ***Do we want to know about the process or the product?***

Should development work be evaluated in terms of the process (the way in which the work is done) or the product (what the work produces)? Often, this debate is more about excusing inadequate performance than it is about a real issue. Process and product are not separate in development work. What we achieve and how we achieve it are often the very same thing. If the goal is development, based on development values, then sinking a well without the transfer of skills for maintaining and managing the well is not enough. Saying: "It was taking too long that way. We couldn't wait for them to sort themselves out. We said we'd sink a well and we did" is not enough. But neither is: "It doesn't matter that the well hasn't happened yet. What's important is that the people have been empowered."

Both process and product should be part of your monitoring and evaluation system.

But how do we make process and product and values measurable? The answer lies in the setting of indicators and this is dealt with in the sub-section that follows.

# Monitoring and Evaluation

## WHAT DO WE WANT TO KNOW?

### Indicators

Indicators are also dealt with in overview of planning, in the section on monitoring and evaluation. Indicators are measurable or tangible signs that something has been done or that something has been achieved. In some studies, for example, an increased number of television aeriels in a community has been used as an indicator that the standard of living in that community has improved. An indicator of community empowerment might be an increased frequency of community members speaking at community meetings. If one were interested in the gender impact of, for example, drilling a well in a village, then you could use “increased time for involvement in development projects available to women” as an indicator. Common indicators for something like overall health in a community are the infant/child/maternal mortality rate, the birth rate, nutritional status and birth weights. You could also look at less direct indicators such as the extent of immunisation, the extent of potable (drinkable) water available and so on. (See further examples of indicators later in this toolkit, in the section on examples.)

Indicators are an essential part of a monitoring and evaluation system because they are what you measure and/or monitor. Through the indicators you can ask and answer questions such as:

- Who?
- How many?
- How often?
- How much?

But you need to decide early on what your indicators are going to be so that you can begin collecting the information immediately. You cannot use the number of television aeriels in a community as a sign of improved standard of living if you don't know how many there were at the beginning of the process.

Some people argue that the problem with measuring indicators is that other variables (or factors) may have impacted on them as well. Community members may be participating more in meetings because a number of new people with activist backgrounds have come to live in the area. Women may have more time for development projects because the men of the village have been attending a gender workshop and have made a decision to share the traditionally female tasks. And so on. While this may be true, within a project it is possible to identify other variables and take them into account. It is also important to note that, if nothing is changing, if there is no improvement in the measurement of the key indicators identified, then your strategy is not working and needs to be rethought.

To see a method for developing indicators, go to the next page.  
To see examples of indicators, go to examples.

# Monitoring and Evaluation

## \* DEVELOPING INDICATORS

Step 1: Identify the problem situation you are trying to address. The following might be problems:

- Economic situation (unemployment, low incomes etc)
- Social situation (housing, health, education etc)
- Cultural or religious situation (not using traditional languages, low attendance at religious services etc)
- Political or organisational situation (ineffective local government, faction fighting etc)

There will be other situations as well.

(See the section on problem analysis in the toolkit on overview of planning, in the section on doing the ground work.)

Step 2: Develop a vision for how you would like the problem areas to be/look. (See the toolkit on strategic planning, the section on vision.) This will give you impact indicators.

What will tell you that the vision has been achieved? What signs will you see that you can measure that will “prove” that the vision has been achieved? For example, if your vision was that the people in your community would be healthy, then you can use health indicators to measure how well you are doing. Has the infant mortality rate gone down? Do fewer women die during child-birth? Has the HIV/AIDS infection rate been reduced? If you can answer “yes” to these questions then progress is being made.

Step 3: Develop a process vision for how you want things to be achieved. This will give you process indicators.

If, for example, you want success to be achieved through community efforts and participation, then your process vision might include things like community health workers from the community trained and offering a competent service used by all; community organises clean-up events on a regular basis, and so on.

Step 4: Develop indicators for effectiveness.

For example, if you believe that you can increase the secondary school pass rate by upgrading teachers, then you need indicators that show you have been effective in upgrading the teachers e.g. evidence from a survey in the schools, compared with a baseline survey.

Step 5: Develop indicators for your efficiency targets.

Here you can set indicators such as: planned workshops are run within the stated timeframe, costs for workshops are kept to a maximum of US\$ 2.50 per participant, no more than 160 hours in total of staff time to be spent on organising a conference; no complaints about conference organisation etc.

With this framework in place, you are in a position to monitor and evaluate efficiency, effectiveness and impact (see Glossary of Terms).



# Monitoring and Evaluation

## DIFFERENT KINDS OF INFORMATION – QUANTITATIVE AND QUALITATIVE

Information used in monitoring and evaluation can be classified as:

- Quantitative; or
- Qualitative.

Quantitative measurement tells you “how much or how many”. How many people attended a workshop, how many people passed their final examinations, how much a publication cost, how many people were infected with HIV, how far people have to walk to get water or firewood, and so on. Quantitative measurement can be expressed in absolute numbers (3 241 women in the sample are infected) or as a percentage (50% of households in the area have television aerials). It can also be expressed as a ratio (one doctor for every 30 000 people). One way or another, you get quantitative (number) information by counting or measuring.

Qualitative measurement tells you how people feel about a situation or about how things are done or how people behave. So, for example, although you might discover that 50% of the teachers in a school are unhappy about the assessment criteria used, this is still qualitative information, not quantitative information. You get qualitative information by asking, observing, interpreting.

Some people find quantitative information comforting – it seems solid and reliable and “objective”. They find qualitative information unconvincing and “subjective”. It is a mistake to say that “quantitative information speaks for itself”. It requires just as much interpretation in order to make it meaningful as does qualitative information. It may be a “fact” that enrolment of girls at schools in some developing countries is dropping – counting can tell us that, but it tells us nothing about why this drop is taking place. In order to know that, you would need to go out and ask questions – to get qualitative information. Choice of indicators is also subjective, whether you use quantitative or qualitative methods to do the actual measuring. Researchers choose to measure school enrolment figures for girls because they believe that this tells them something about how women in a society are treated or viewed.

The monitoring and evaluation process requires a combination of quantitative and qualitative information in order to be comprehensive. For example, we need to know what the school enrolment figures for girls are, as well as why parents do or do not send their children to school. Perhaps enrolment figures are higher for boys than for girls because a particular community sees schooling as a luxury and prefers to train boys to do traditional and practical tasks such as taking care of animals. In this case, the higher enrolment of girls does not necessarily indicate higher regard for girls.



# Monitoring and Evaluation

## HOW WILL WE GET INFORMATION?

This is dealt with in some detail in the toolkit on action planning, in the section on monitoring, collecting information as you go along. Your methods for information collecting need to be built into your action planning. You should be aiming to have a steady stream of information flowing into the project or organisation about the work and how it is done, without overloading anyone. The information you collect must mean something: don't collect information to keep busy, only do it to find out what you want to know, and then make sure that you store the information in such a way that it is easy to access.

Usually you can use the reports, minutes, attendance registers, financial statements that are part of your work anyway as a source of monitoring and evaluation information.

However, sometimes you need to use special tools that are simple but useful to add to the basic information collected in the natural course of your work. Some of the more common ones are:

- Case studies
- Recorded observation
- Diaries
- Recording and analysis of important incidents (called "critical incident analysis")
- Structured questionnaires
- One-on-one interviews
- Focus groups
- Sample surveys
- Systematic review of relevant official statistics.

Go to the section on **methods** for more on ways of collecting information.



# Monitoring and Evaluation

## WHO SHOULD BE INVOLVED?

Almost everyone in the organisation or project will be involved in some way in collecting information that can be used in monitoring and evaluation. This includes:

- The administrator who takes minutes at a meeting or prepares and circulates the attendance register;
- The fieldworkers who writes reports on visits to the field;
- The bookkeeper who records income and expenditure.

In order to maximise their efforts, the project or organisation needs to:

- Prepare reporting formats that include measurement, either quantitative or qualitative, of important indicators. For example, if you want to know about community participation in activities, or women's participation specifically, structure the fieldworkers reporting format so that s/he has to comment on this, backing up observations with facts. (Look at the fieldworker report format given later in this toolkit.)
- Prepare recording formats that include measurement, either quantitative or qualitative, of important indicators. For example, if you want to know how many men and how many women attended a meeting, include a gender column on your attendance list.
- Record information in such a way that it is possible to work out what you need to know. For example, if you need to know whether a project is sustainable financially, and which elements of it cost the most, then make sure that your bookkeeping records reflect the relevant information.

It is a useful principle to look at every activity and say: What do we need to know about this activity, both process (how it is being done) and product (what it is meant to achieve), and what is the easiest way to find it out and record it as we go along?



# Monitoring and Evaluation

## Designing a monitoring and/or evaluation process

As there are differences between the design of a monitoring system and that of an evaluation process, we deal with them separately here.

Under **monitoring** we look at the process an organisation could go through to design a monitoring system.

Under **evaluation** we look at:

- **Purpose**
- **Key evaluation questions**
- **Methodology.**



# Monitoring and Evaluation

## MONITORING

When you design a monitoring system, you are taking a formative view point and establishing a system that will provide useful information on an ongoing basis so that you can improve what you do and how you do it.

On the next page, you will find a suggested process for designing a monitoring system.

For a case study of how an organisation went about designing a monitoring system, go to the section with examples, and the example given of designing a monitoring system.

# Monitoring and Evaluation

## \* DESIGNING A MONITORING SYSTEM

Below is a step-by-step process you could use in order to design a monitoring system for your organisation or project.

For a case study of how an organisation went about designing a monitoring system, go to examples.

Step 1: At a workshop with appropriate staff and/or volunteers, and run by you or a consultant:

- Introduce the concepts of efficiency, effectiveness and impact (see Glossary of Terms).
- Explain that a monitoring system needs to cover all three.
- Generate a list of **indicators** for each of the three aspects.
- Clarify what variables (see Glossary of Terms) need to be linked. So, for example, do you want to be able to link the age of a teacher with his/her qualifications in order to answer the question: Are older teachers more or less likely to have higher qualifications?
- Clarify what information the project or organisation is already collecting.

Step 2: Turn the input from the workshop into a brief for the questions your monitoring system must be able to answer. Depending on how complex your requirements are, and what your capacity is, you may decide to go for a computerised data base or a manual one. If you want to be able to link many **variables** across many cases (e.g. participants, schools, parent involvement, resources, urban/rural etc), you may need to go the computer route. If you have a few variables, you can probably do it manually. The important thing is to begin by knowing what variables you are interested in and to keep data on these variables. Linking and analysis can take place later. (These concepts are complicated. It will help you to read the case study in the examples section of the toolkit.)

From the workshop you will know what you want to monitor. You will have the indicators of efficiency, effectiveness and impact that have been prioritised. You will then choose the variables that will help you answer the questions you think are important.

So, for example, you might have an indicator of impact which is that “safer sex options are chosen” as an indicator that “young people are now making informed and mature lifestyle choices”. The variables that might affect the indicator include:

- Age
- Gender
- Religion
- Urban/rural
- Economic category
- Family environment
- Length of exposure to your project’s initiative
- Number of workshops attended.

# Monitoring and Evaluation

By keeping the right information you will be able to answer questions such as:

- Does age make a difference to the way our message is received?
- Does economic category i.e. do young people in richer areas respond better or worse to the message or does it make no difference?
- Does the number of workshops attended make a difference to the impact?

Answers to these kinds of questions enable a project or organisation to make decisions about what they do and how they do it, to make informed changes to programmes, and to measure their impact and effectiveness. Answers to questions such as:

- Do more people attend sessions that are organised well in advance?
- Do more schools participate when there is no charge?
- Do more young people attend when sessions are over weekends or in the evenings?
- Does it cost less to run a workshop in the community, or to bring people to our training centre to run the workshop?

enable the project or organisation to measure and improve their efficiency.

- Step 3: Decide how you will collect the information you need (**see collecting information**) and where it will be kept (on computer, in manual files).
- Step 4: Decide how often you will analyse the information – this means putting it together and trying to answer the questions you think are important.
- Step 5: Collect, analyse, report.



# Monitoring and Evaluation

## EVALUATION

Designing an evaluation process means being able to develop Terms of Reference for such a process (if you are the project or organisation) or being able to draw up a sensible proposal to meet the needs of the project or organisation (if you are a consultant).

The main sections in Terms of Reference for an evaluation process usually include:

- **Background:** This is background to the project or organisation, something about the problem identified, what you do, how long you have existed, why you have decided to do an evaluation.
- **Purpose:** Here you would say what it is the organisation or project wants the evaluation to achieve.
- **Key evaluation questions:** What the central questions are that the evaluation must address.
- **Specific objectives:** What specific areas, internal and/or external, you want the evaluation to address. So, for example, you might want the evaluation to include a review of finances, or to include certain specific programme sites.
- **Methodology:** here you might give broad parameters of the kind of approach you favour in evaluation (see the section on more about monitoring and evaluation). You might also suggest the kinds of techniques you would like the evaluation team to use.
- **Logistical issues:** These would include timing, costing, requirements of team composition and so on.

For more on some of the more difficult components of Terms of Reference, see the following pages.



# Monitoring and Evaluation

## Purpose

The purpose of an evaluation is the reason why you are doing it. It goes beyond what you want to know to why you want to know it. It is usually a sentence or, at most, a paragraph. It has two parts:

- What you want evaluated;
- To what end you want it done.

Examples of an evaluation purpose could be:

*To provide the organisation with information needed to make decisions about the future of the project.*

*To assess whether the organisation/project is having the planned impact in order to decide whether or not to replicate the model elsewhere.*

*To assess the programme in terms of effectiveness, impact on the target group, efficiency and sustainability in order to improve its functioning.*

The purpose gives some focus to the broad evaluation process.

# Monitoring and Evaluation

## Key evaluation questions

The key evaluation questions are the central questions you want the evaluation process to answer. They are not simple questions. You can seldom answer “yes” or “no” them. A useful evaluation question is:

- Thought provoking
- Challenges assumptions.
- Focuses inquiry and reflection.
- Raises many additional questions.

Some examples of key evaluation questions related to a project purpose:

*The purpose of the evaluation is to assess how efficient the project is in delivering benefits to the identified community in order to inform Board decisions about continuity and replicability.*

*Key evaluation questions:*

- Who is currently benefiting from the project and in what ways?
- Do the inputs (in money and time) justify the outputs and, if so/if not, on what basis is this claim justified?
- What would improve the efficiency, effectiveness and impact of the current project?
- What are the lessons that can be learned from this project in terms of replicability?

Note that none of these questions deals with a specific element or area of the internal or external functioning of the project or organisation. Most would require the evaluation team to deal with a range of project or organisational elements in order to answer them.

Other examples of evaluation questions might be:

- What are the most effective ways in which a project of this kind can address the problem identified?
- To what extent does the internal functioning and structure of the organisation impact positively on the programme work?
- What learnings from this project would have applicability across the full development spectrum?

Clearly, there could be many, many examples. Our experience has shown us that, when an evaluation process is designed with such questions in mind, it produces far more interesting insights than simply asking obvious questions such as: Does the Board play a useful role in the organisation? Or: What impact are we having?



# Monitoring and Evaluation

## Methodology

“Methodology” as opposed to “methods” deals more with the kind of approach you use in your evaluation process. (See also more about monitoring and evaluation earlier in the toolkit). You could, for example, commission or do an evaluation process that looked almost entirely at written sources, primary or secondary: reports, data sheets, minutes and so on. Or you could ask for an evaluation process that involved getting input from all the key stakeholder groups. Most terms of reference will ask for some combination of these but they may also specify how they want the evaluation team to get input from stakeholder groups for example:

- Through a survey;
- Through key informants;
- Through focus groups.

(For more on actual methods, see the later section on collecting information, methods.)

Here too one would expect to find some indication of reporting formats: Will all reporting be written? Will the team report to management, or to all staff, or to staff and Board and beneficiaries? Will there be interim reports or only a final report? What sort of evidence does the organisation or project require to back up evaluator opinions? Who will be involved in analysis?

The methodology section of Terms of Reference should provide a broad framework for how the project or organisation wants the work of the evaluation done.



# Monitoring and Evaluation

## Collecting Information

(This is also dealt with in the toolkit on action planning, in the section on monitoring, collecting information as you go along.)

Here we look in detail at:

- Baselines and damage control;
- Methods.

By damage control we mean what you need to do if you failed to get baseline information when you started out.

# Monitoring and Evaluation

## BASELINES AND DAMAGE CONTROL

Ideally, if you have done your planning well and collected information about the situation at the beginning of your intervention, you will have baseline data.

**Baseline data** is the information you have about the situation before you do anything. It is the information on which your problem analysis is based. It is very difficult to measure the impact of your initiative if you do not know what the situation was when you began it. (See also the toolkit on overview of planning, the section on doing the ground work.) You need baseline data that is relevant to the indicators you have decided will help you measure the impact of your work.

There are different levels of baseline data:

- General information about the situation, often available in official statistics e.g. infant mortality rates, school enrolment by gender, unemployment rates, literacy rates and so on. If you are working in a particular geographical area, then you need information for that area. If it is not available in official statistics, you may need to do some information gathering yourselves. This might involve house-to-house surveying, either comprehensively or using sampling (see the section after this on methods), or visiting schools, hospitals etc. Focus on your indicators of impact when you collect this information.
- If you have decided to measure impact through a sample of people or families with whom you are working, you will need specific information about those people or families. So, for example, for families (or business enterprises or schools or whatever units you are working with) you may want specific information about income, history, number of people employed, number of children per classroom and so on. You will probably get this information from a combination of interviewing and filling in of basic questionnaires. Again, remember to focus on the indicators which you have decided are important for your work.
- If you are working with individuals, then you need “intake” information – documented information about their situation at the time you began working with them. For example, you might want to know, in addition to age, gender, name and so on, current income, employment status, current levels of education, amount of money spent on leisure activities, amount of time spent on leisure activities, ambitions and so on, for each individual participant. Again, you will probably get the information from a combination of interviewing and filling in of basic questionnaires, and you should focus on the indicators which you think are important.

It is very difficult to go back and get this kind of baseline information after you have begun work and the situation has changed. But what if you didn't collect this information at the beginning of the process? There are ways of doing **damage control**. You can get anecdotal information (see Glossary of Terms) from those who were involved at the beginning and you can ask participants if they remember what the situation was when the project began. You may not even have decided what your important indicators are when you began your work. You will have to work it out “backwards”, and then try to get information about the situation related to those indicators when you started out. You can speak to people, look at records and other written sources such as minutes, reports and so on.

## Monitoring and Evaluation

One useful way of making meaningful comparisons where you do not have baseline information is through using **control groups**. Control groups are groups of people, businesses, families or whatever unit you are focusing on, that have not had input from your project or organisation but are, in most other ways, very similar to those you are working with.

For example: You have been working with groups of school children around the country in order to build their self-esteem and knowledge as a way of combating the spread of HIV/AIDS and preventing teenage pregnancies. After a few years, you want to measure what impact you have had on these children. You are going to run a series of focus groups (see methods) with the children at the schools where you have worked. But you did not do any baseline study with them. ***How will you know what difference you have made?***

You could set up a control groups at schools in the same areas, with the same kinds of profiles, where you have not worked. By asking both the children at those schools you have worked at, and the children at the schools where you have not worked, the same sorts of questions about self-esteem, sexual behaviour and so on, you should be able to tell whether or not your work has made any difference. When you set up control groups, you should try to ensure that:

- The profiles of the control groups are very similar to those of the groups you have worked with. For example, it might be schools that serve the same economic group, in the same geographical area, with the same gender ratio, age groups, ethnic or racial mix.
- There are no other very clear variables that could affect the findings or comparisons. For example, if another project, doing similar work, has been involved with the school, this school would not be a good place to establish a control group. You want a situation as close to what the situation was with the beneficiaries of your project when you started out.

# Monitoring and Evaluation

## METHODS

In this section we are going to give you a “shopping list” of the different kinds of methods that can be used to collect information for monitoring and evaluation purposes. You need to select methods that suit your purposes and your resources. Do not plan to do a comprehensive survey of 100 000 households if you have two weeks and very little money! Use sampling in this case.

**Sampling** (see Glossary of Terms) is another important concept when using various tools for a monitoring or evaluation process. Sampling is not really a tool in itself, but used with other tools it is very useful. Sampling answers the question: Who do we survey, interview, include in a focus group etc? It is a way of narrowing down the number of possible respondents to make it manageable and affordable. Sometimes it is necessary to be comprehensive. This means getting to every possible household, or school or teacher or clinic etc. In an evaluation, you might well use all the information collected in every case during the monitoring process in an overall analysis. Usually, however, unless numbers are very small, for in-depth exploration you will use a sample. Sampling techniques include:

- Random sampling (In theory random sampling means doing the sampling on a sort of lottery basis where, for example all the names go into a container, are tumbled around and then the required number are drawn out. This sort of random sampling is very difficult to use in the kind of work we are talking about. For practical purposes you are more likely to, for example, select every seventh household or every third person on the list. The idea is that there is no bias in the selection.);
- Stratified sampling (e.g. every seventh household in the upper income bracket, every third household in the lower income bracket);
- Cluster sampling (e.g. only those people who have been on the project for at least two years).

It is also usually best to use **triangulation** (See Glossary of Terms). This is a fancy word that means that one set of data or information is confirmed by another. You usually look for confirmation from a number of sources saying the same thing.

Tool	Description	Usefulness	Disadvantages
Interviews	These can be structured, semi-structured or unstructured (see Glossary of Terms). They involve asking specific questions aimed at getting information that will enable indicators to be measured. Questions can be open-ended or closed (yes/no answers). Can be a source of qualitative and quantitative information.	Can be used with almost anyone who has some involvement with the project. Can be done in person or on the telephone or even by e-mail. Very flexible.	Requires some skill in the interviewer. For more on interviewing skills, see later in this toolkit.
Key informant interviews	These are interviews that are carried out with specialists in a topic or someone who may be able to shed a particular light on the process.	As these key informants often have little to do with the project or organisation, they can be quite objective and offer useful insights. They can provide something of the	Needs a skilled interviewer with a good understanding of the topic. Be careful not to turn something into an absolute truth (cannot be challenged) because it

## Monitoring and Evaluation

		“big picture” where people more involved may focus at the micro (small) level.	has been said by a key informant.
Questionnaires	These are written questions that are used to get written responses which, when analysed, will enable indicators to be measured.	This tool can save lots of time if it is self-completing, enabling you to get to many people. Done in this way it gives people a feeling of anonymity and they may say things they would not say to an interviewer.	With people who do not read and write, someone has to go through the questionnaire with them which means no time is saved and the numbers one can reach are limited. With questionnaires, it is not possible to explore what people are saying any further. Questionnaires are also over-used and people get tired of completing them. Questionnaires must be piloted to ensure that questions can be understood and cannot be misunderstood. If the questionnaire is complex and will need computerised analysis, you need expert help in designing it.
Focus groups	In a focus group, a group of about six to 12 people are interviewed together by a skilled interviewer/facilitator with a carefully structured interview schedule. Questions are usually focused around a specific topic or issue.	This can be a useful way of getting opinions from quite a large sample of people.	It is quite difficult to do random sampling for focus groups and this means findings may not be generalised. Sometimes people influence one another either to say something or to keep quiet about something. If possible, focus groups interviews should be recorded and then transcribed. This requires special equipment and can be very time-consuming.
Community meetings	This involves a gathering of a fairly large group of beneficiaries to whom questions, problems, situations are put for input to help in measuring indicators.	Community meetings are useful for getting a broad response from many people on specific issues. It is also a way of involving beneficiaries directly in an evaluation process, giving them a sense of ownership of the process. They are useful to have at critical points in community projects.	Difficult to facilitate – requires a very experienced facilitator. May require breaking into small groups followed by plenary sessions when everyone comes together again.
Fieldworker reports (See also fieldworker reporting format under examples)	Structured report forms that ensure that indicator-related questions are asked and answers recorded, and observations recorded on every visit.	Flexible, an extension of normal work, so cheap and not time-consuming.	Relies on field workers being disciplined and insightful.

# Monitoring and Evaluation

Ranking	This involves getting people to say what they think is most useful, most important, least useful etc.	It can be used with individuals and groups, as part of an interview schedule or questionnaire, or as a separate session. Where people cannot read and write, pictures can be used.	Ranking is quite a difficult concept to get across and requires very careful explanation as well as testing to ensure that people understand what you are asking. If they misunderstand, your data can be completely distorted.
Visual/audio stimuli	These include pictures, movies, tapes, stories, role plays, photographs, used to illustrate problems or issues or past events or even future events.	Very useful to use together with other tools, particularly with people who cannot read or write.	You have to have appropriate stimuli and the facilitator needs to be skilled in using such stimuli.
Rating scales	This technique makes use of a continuum, along which people are expected to place their own feelings, observations etc. People are usually asked to say whether they agree strongly, agree, don't know, disagree, disagree strongly with a statement. You can use pictures and symbols in this technique if people cannot read and write.	It is useful to measure attitudes, opinions, perceptions.	You need to test the statements very carefully to make sure that there is no possibility of misunderstanding. A common problem is when two concepts are included in the statement and you cannot be sure whether an opinion is being given on one or the other or both.
Critical event/incident Analysis	This method is a way of focusing interviews with individuals or groups on particular events or incidents. The purpose of doing this is to get a very full picture of what actually happened.	Very useful when something problematic has occurred and people feel strongly about it. If all those involved are included, it should help the evaluation team to get a picture that is reasonably close to what actually happened and to be able to diagnose what went wrong.	The evaluation team can end up submerged in a vast amount of contradictory detail and lots of "he said/she said". It can be difficult not to take sides and to remain objective.
Participant observation	This involves direct observation of events, processes, relationships and behaviours. "Participant" here implies that the observer gets involved in activities rather than maintaining a distance.	It can be a useful way of confirming, or otherwise, information provided in other ways.	It is difficult to observe and participate. The process is very time-consuming.
Self-drawings	This involves getting participants to draw pictures, usually of how they feel or think about something.	Can be very useful, particularly with younger children.	Can be difficult to explain and interpret.

## \* INTERVIEWING SKILLS

### Some do's and don'ts for interviewing:

- DO test the interview schedule beforehand for clarity, and to make sure questions cannot be misunderstood.
- DO state clearly what the purpose of the interview is.
- Do assure the interviewee that what is said will be treated in confidence.
- DO ask if the interviewee minds if you take notes or tape record the interview.
- DO record the exact words of the interviewee as far as possible.
- DO keep talking as you write.
- Do keep the interview to the point.
- Do cover the full schedule of questions.
- DO watch for answers that are vague and probe for more information.
- DO be flexible and note down everything interesting that is said, even if it isn't on the schedule.
- DON'T offend the interviewee in any way.
- DON'T say things that are judgmental.
- DON'T interrupt in mid-sentence.
- DON'T put words into the interviewees mouth.
- DON'T show what you are thinking through changed tone of voice.

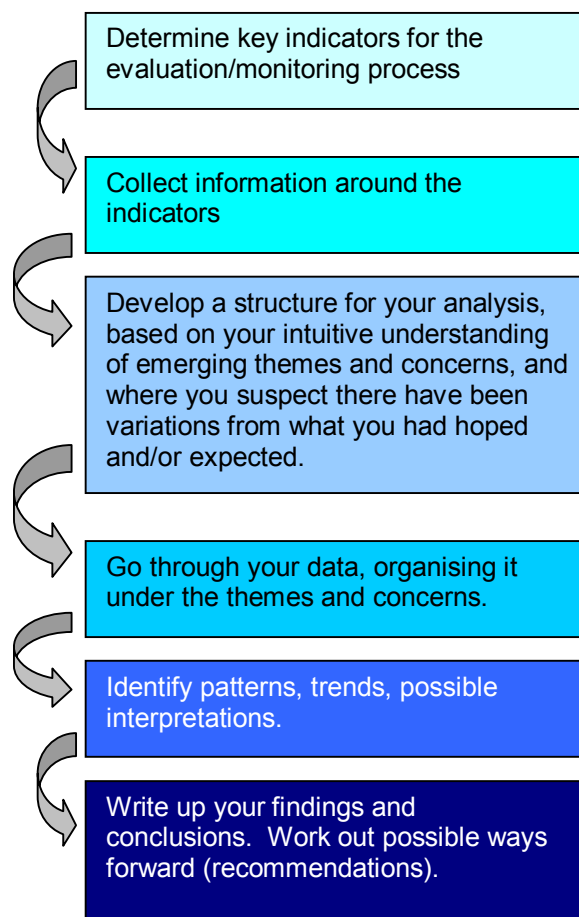
# Monitoring and Evaluation

## Analysing information

Whether you are looking at monitoring or evaluation, at some point you are going to find yourself with a large amount of information and you will have to decide how to make sense of it or to analyse it. If you are using an external evaluation team, it will be up to this team to do the analysis, but, sometimes in evaluation, and certainly in monitoring, you, the organisation or project, have to do the analysis.

Analysis is the process of turning the detailed information into an understanding of patterns, trends, interpretations. The starting point for analysis in a project or organisational context is quite often very unscientific. It is your intuitive understanding of the key themes that come out of the information gathering process. Once you have the key themes, it becomes possible to work through the information, structuring and organising it. The next step is to write up your analysis of the findings as a basis for reaching conclusions, and making recommendations.

So, your process looks something like this:





# Monitoring and Evaluation

## Taking action

Monitoring and evaluation have little value if the organisation or project does not act on the information that comes out of the analysis of data collected. Once you have the findings, conclusions and recommendations from your monitoring and evaluation process, you need to:

- Report to your stakeholders;
- Learn from the overall process;
- Make effective decisions about how to move forward; and, if necessary,
- Deal with resistance to the necessary changes within the organisation or project, or even among other stakeholders.

# Monitoring and Evaluation

## REPORTING

Whether you are monitoring or evaluating, at some point, or points, there will be a reporting process. This reporting process follows the stage of analysing information. You will report to different stakeholders in different ways, sometimes in written form, sometimes verbally and, increasingly, making use of tools such as Powerpoint presentations, slides and videos.

Below is a table, suggesting different reporting mechanisms that might be appropriate for different stakeholders and at different times in project cycles. For writing tips, go to the toolkit on effective writing for organisations.

Target group	Stage of project cycle	Appropriate format
Board	Interim, based on monitoring analysis	Written report
	Evaluation	Written report, with an Executive Summary, and verbal presentation from the evaluation team.
Management Team	Interim, based on monitoring analysis	Written report, discussed at management team meeting.
	Evaluation	Written report, presented verbally by the evaluation team.
Staff	Interim, based on monitoring	Written and verbal presentation at departmental and team levels.
	Evaluation	Written report, presented verbally by evaluation team and followed by in-depth discussion of relevant recommendations at departmental and team levels.
Beneficiaries	Interim, but only at significant points, and evaluation	Verbal presentation, backed up by summarised document, using appropriate tables, charts, visuals and audio-visuals. This is particularly important if the organisation or project is contemplating a major change that will impact on beneficiaries.
Donors	Interim, based on monitoring	Summarised in a written report.
	Evaluation	Full written report with executive summary or a special version, focused on donor concerns and interests.
Wider development community	Evaluation	Journal articles, seminars, conferences, websites.

For an outline of what would normally be contained in a written report, go to the following page.

# Monitoring and Evaluation

## \* OUTLINE OF AN EVALUATION REPORT

EXECUTIVE SUMMARY	(Usually not more than five pages – the shorter the better – intended to provide enough information for busy people, but also to tease people’s appetite so that they want to read the full report.)
PREFACE	(Not essential, but a good place to thank people and make a broad comment about the process, findings etc.)
CONTENTS PAGE	(With page numbers, to help people find their way around the report.)
SECTION 1: INTRODUCTION:	(Usually deals with background to the project/organisation, background to the evaluation, the brief to the evaluation team, the methodology, the actual process and any problems that occurred.)
SECTION 2: FINDINGS:	(Here you would have sections dealing with the important areas of findings, e.g. efficiency, effectiveness and impact, or the themes that have emerged.)
SECTION 3: CONCLUSIONS:	(Here you would draw conclusions from the findings – the interpretation, what they mean. It is quite useful to use a SWOT Analysis – explained in Glossary of Terms - as a summary here.)
SECTION 4: RECOMMENDATIONS:	(This would give specific ideas for a way forward in terms of addressing weaknesses and building on strengths.)
APPENDICES:	(Here you would include Terms of Reference, list of people interviewed, questionnaires used, possibly a map of the area and so on.)



# Monitoring and Evaluation

## LEARNING

Learning is, or should be, the main reason why a project or organisation monitors its work or does an evaluation. By learning what works and what does not, what you are doing right and what you are doing wrong, you, as project or organisation management, are empowered to act in an informed and constructive way. This is part of a cycle of **action reflection**. (See the diagram in the section on why do monitoring and evaluation?)

The purpose of learning is to make changes where necessary, and to identify and build on strengths where they exist. Learning also helps you to understand, to make conscious, assumptions you have. So, for example, perhaps you assumed that children at more affluent schools would have benefited less from your intervention than those from less affluent schools. Your monitoring data might show you that this assumption was wrong. Once you realise this, you will probably view your interactions with these schools differently.

Being in a constant mode of action-reflection-action also helps to make you less complacent. Sometimes, when projects or organisations feel they “have got it right”, they settle back and do things the same way, without questioning whether they are **still** getting it right. They forget that situations change, that the needs of project beneficiaries may change, and that strategies need to be reconsidered and revised.

So, for example, an organisation provided training and programmes for community radio stations. Because it had excellent equipment and an excellent production studio, it invited stations to send presenters to its training centre for training in how to present the programmes it (the organisation) was producing. It developed an excellent reputation for high quality training and production. Over time, however, the community radio stations began to produce their own programmes and what they really wanted was for the organisation to send someone to their stations to help them workshop ideas and to give them feedback on the work they were doing. This came out in an evaluation process and organisation realised that it had become a bit smug in the comfort zone of what it was good at, but that, if it really wanted to help community radio stations, it needed to change its strategy.

Organisations and projects that don't learn, stagnate. The process of rigorous (see Glossary of Terms) monitoring and evaluation forces organisations and projects to keep learning - and growing.

# Monitoring and Evaluation

## EFFECTIVE DECISION-MAKING

As project or organisation management, you need the conclusions and recommendations that come out of monitoring and evaluation to help you make decisions about your work and the way you do it.

The success of the process is dependent on the ability of those with management responsibilities to make decisions and take action. The steps involved in the whole process are:

- 1 Plan properly – know what you are trying to achieve and how you intend to achieve it
- 2 Implement
- 3 Monitor and evaluate.
- 4 Analyse the information you get from monitoring and evaluation and work out what it is telling you.
- 5 Look at the potential consequences to your plans of what you have learned from the analysis of your monitoring and evaluation data.
- 6 Draw up a list of options for action.
- 7 Get consensus on what you should do and a mandate to take action.
- 8 Share adjustments and plans with the rest of the organisation and, if necessary, your donors and beneficiaries.
- 9 Implement.
- 10 Monitor and evaluate.

The key steps for effective decision making are:

- As a management team, understand the implications of what you have learned.
- Work out what needs to be done and have clear motivations for why it needs to be done.
- Generate options for how to do it.
- Look at the options critically in terms of which are likely to be the most effective.
- Agree as a management team.
- Get organisational/project consensus on what needs to be done and how it needs to be done.
- Get a mandate (usually from a Board, but possibly also from donors and beneficiaries) to do it.
- Do it.

# Monitoring and Evaluation

## DEALING WITH RESISTANCE

Not everyone will be pleased about any changes in plans you decide need to be made. People often resist change. Some of the reasons for this include:

- People are comfortable with things the way they are – they don't want to be pushed out of their comfort zones.
- People worry that any changes will lessen their levels of productivity – they feel judged by what they do and how much they do, and don't want to take the time out necessary to change plans or ways of doing things.
- People don't like to rush into change – how do we know that something different will be better? They spend so long thinking about it that it is too late for useful changes to be made.
- People don't have a "big picture". They know what they are doing and they can see it is working, so they can't see any reason to change anything at all.
- People don't have a long term commitment to the project or the organisation – they see it as a stepping stone on their career path. They don't want change because it will delay the items they want to be able to tick off on their curriculum vitae.
- People feel they can't cope – they have to keep doing what they are doing but also work at bringing about change. It's all too much.

### How can you help people accept changes?

- Make the reasons why change is needed very clear – take people through the findings and conclusions of the monitoring and evaluation processes, involve them in decision-making.
- Help people see the whole picture – beyond their little bit to the overall impact on the problem analysed.
- Focus on the key issues – we have to do something about this!
- Recognise anger, fear, resistance. Listen to people, give them the opportunity to express frustration and other emotions.
- Find common ground – things that they also want to see changed.
- Encourage a feeling that change is exciting, that it frees people from doing things that are not working so they can try new things that are likely to work, that it releases productive energy.
- Emphasise the importance of everyone being committed to making it work.
- Create conditions for regular interaction – anything from a seminar to graffiti on a notice board - to discuss what is happening and how it is going.
- Pace change so that people can deal with it.

(Thanks to *Olive Publications, Ideas for a Change Part 4*, June 1999, for the ideas used in this sub-section.)

## BEST PRACTICE

### EXAMPLES OF INDICATORS

*Please note that these are just examples – they may or may not suit your needs but they should give you some idea of the kind of indicators you can use, especially for measuring impact.*

#### Economic Development Indicators

- Average annual household income
- Average weekly/monthly wages
- Employment, by age group
- Unemployment, by age group, by gender
- Employment, by occupation, by gender
- Government employment
- Earned income levels
- Average length of unemployment period
- Default rates on loans
- Ratio of home owners to renters
- Per capita income
- Average annual family income
- % people below the poverty line
- Ratio of seasonal to permanent employment
- Growth rate of small businesses
- Value of residential construction and/or renovation

#### Social Development Indicators

- Death rate
- Life expectancy at birth
- Infant mortality rates
- Causes of death
- Number of doctors per capita
- Number of hospital beds per capita
- Number of nurses per capita
- Literacy rates, by age and gender
- Student: teacher ratios
- Retention rate by school level
- School completion rates by exit points
- Public spending per student
- Number of suicides
- Causes of accidents
- Dwellings with running water
- Dwellings with electricity
- Number of homeless
- Number of violent crimes
- Birth rate
- Fertility rate
- Gini distribution of income (see Glossary of Terms)
- Infant mortality rate

# Monitoring and Evaluation

- ❑ Rates of hospitalisation
- ❑ Rates of HIV infection
- ❑ Rates of AIDS deaths
- ❑ Number of movie theatres/swimming pools per 1000 residents
- ❑ Number of radios/televisions per capita
- ❑ Availability of books in traditional languages
- ❑ Traditional languages taught in schools
- ❑ Time spent on listening to radio/watching television by gender
- ❑ Number of programmes on television and radio in traditional languages and/or dealing with traditional customs
- ❑ Church participation, by age and gender

## **Political/organisational Development Indicators**

- ❑ Number of community organisations
- ❑ Types of organised sport
- ❑ Number of tournaments and games
- ❑ Participation levels in organised sport
- ❑ Number of youth groups
- ❑ Participation in youth groups
- ❑ Participation in women's groups
- ❑ Participation in groups for the elderly
- ❑ Number of groups for the elderly
- ❑ Structure of political leadership, by age and gender
- ❑ Participation rate in elections, by age and gender
- ❑ Number of public meetings held
- ❑ Participation in public meetings, by age and gender

Examples adapted from *Using Development Indicators for Aboriginal Development*, the Development Indicator Project Steering Committee, September 1991

# Monitoring and Evaluation

## DESIGNING A MONITORING SYSTEM – CASE STUDY

What follows is a description of a process that a South African organisation called Puppets against AIDS went through in order to develop a monitoring system which would feed into monitoring and evaluation processes.

The main work of the organisation is presenting workshopped plays and/or puppet shows related to lifeskill issues, especially those lifeskills to do with sexuality, at schools, across the country. The organisation works with a range of age groups, with different “products” (scripts) being appropriate at different levels.

Puppets against AIDS wanted to develop a monitoring and evaluation system that provided useful information on the efficiency, effectiveness and impact of its operations. To this end, it wanted to develop a data base that:

- Provided all the basic information the organisation needed about clients and services given;
- Produced reports that enabled the organisation to inform itself and other stakeholders, including donors, partners and even schools, about the impact of the work, and what affected the impact of the work.

The organisation made a decision to go for a computerised monitoring system. Much of the day-to-day information needed by the organisation was already on a computerised data base (e.g. schools, regions, services provided and so on), but the monitoring system would require a substantial upgrading and the development of data base software specific to the organisation’s needs. The organisation also made the decision to develop a system initially for a pilot project, but with the intention of extending it to all the work over time. This pilot project would work with about 60 schools, using different scripts each year, over a period of three years. In order to raise the money needed for this process, Puppets against AIDS needed some kind of a brief for what was required so that it could be costed.

At an initial workshop with staff, facilitated by consultants, the staff generated a list of indicators for efficiency, effectiveness and impact, in relation to their work. These were the things staff wanted to know from the system about what they did, how they did it, and what difference it made. The terms were defined as follows:

Efficiency	Here what needed to be assessed was how quickly, how correctly, how cost effectively and with what use of resources the services of the organisation were offered. Much of this information was already collected and was contained in reports which reflected planning against achievement. It needed to be made “computer friendly”.
Effectiveness	Here what needed to be assessed was getting results in terms of the strategy and shorter-term impact. For example, were the puppet shows an effective means of communicating messages about sexuality? Again, this information was already being collected and just needed to be adapted to fit the computerised system.
Impact	Here what needed to be assessed was whether the strategy worked in that it had an impact on changing behaviour in individuals (in this case the students) and that that change in behaviour impacted positively on

## Monitoring and Evaluation

the society of which the individuals are a part. The organisation had a strong intuitive feeling that it was working, but wanted to be able to measure this more scientifically and to be able to look at what variables made impact more or less likely, or affected the degree of impact.

Staff generated a list of the different variables that they thought might be important in assessing and accounting for differences of impact. The monitoring system would need to link information on impact to these variables. The intention was to provide both qualitative and quantitative information.

The consultants and a senior staff member then developed measurable indicators of impact and a tabulation of important variables which included:

- Gender and age profile of proposed age cohort
- Economic profile of school
- Religious profile of the school
- Teacher profile at the school
- Approach to discipline at the school
- Which scripts were used
- Which acting teams presented the scripts
- And so on.

Forms/questionnaires were developed to measure impact indicators before the first intervention (to provide baseline information) and then at various points in the process, as well as to categorise such concepts as “teacher profile”. With the student questionnaire, it was designed in such a way to make it possible to aggregate a score which could be compared when the questionnaire was administered at different stages in the process. The questionnaire took the form of a series of statements with which students were asked to agree/disagree/strongly agree/strongly disagree etc. So, for example, statements to do with an increase in student self-esteem included “When I look in a mirror, I like what I see”, and “Most of the people I know like the real me”.

The organisation indicated that it wanted the system to generate reports that would enable it to know:

- What difference is there between the indicator ratings on the impact objective at the beginning and end of the process?
- What difference is there between teacher attitudes at the beginning and end of the process?
- What variables to do with the school and school environment impact on the degree of difference between indicators at the beginning and end of the process?
- What variables to do with the way in which the shows are presented impact on the degree of difference at the beginning and end of the process?

All this was written up as a brief which was given to software experts who then came up with a system that would meet the necessary requirements. The process was slow and demanding but eventually the system was in place and it is currently being tested.



# Monitoring and Evaluation

## FIELDWORKER REPORTING FORMAT

This format was used by an early childhood development learning centre to measure the following indicators in the informal schools with which it worked:

- Increasingly skilled educare teachers.
- Increased amount of self-made equipment.
- Records up-to-date.
- Payments up-to-date.
- Attendance at committee meetings.

---

## CARE-ED FIELD VISIT REPORT

Date:

Name of school:

Information obtained from:

Report completed by:

Field visit number: \_\_\_\_\_

-----

1. List the skills used by the teachers in the time period of your visit to the school:

2. List self-made equipment visible in the school:

3. List the fundraising activities the school committee is currently involved in:

# Monitoring and Evaluation

4. Record-keeping assessment:

Kind of record	Up-to-date and accurate	Up-to-date but not very accurate	Not up-to-date	Not attempted
Bookkeeping				
Petty cash				
Filing				
Correspondence				
Stock control				
Registers				

5. Number of children registered:

Average attendance over past two months:

6. Number of payments outstanding for longer than two months:

7. Average attendance at committee meetings over past two months:

8. Comments on this visit:

9. Comparison with previous field visit:



# Monitoring and Evaluation

## RESOURCES

CIVICUS would like to acknowledge the following as invaluable resources in the preparation of this toolkit:

Olive Publications    Planning for Monitoring and Evaluation, Olive 2002

Shapiro, Janet        Evaluation: Judgement Day or Management Tool? Olive 1996



# Monitoring and Evaluation

## GLOSSARY OF TERMS

Anecdotal information	Anecdotal information is information that comes in the form of stories people remember that are relevant to the indicators you are interested in. They do not have scientific validity, but they can provide useful qualitative information.
Baseline data	Baseline information comes from a study done before an intervention. It provides you with data (information) about the situation before an intervention. This information is very important when you get to monitoring and evaluation as it enables you to assess what difference the intervention has made.
Bottom line	In business, bottom line refers to the bottom line of your profit and loss report – it tells you whether or not you are making a profit. This is how business assesses success. In development work, the “bottom line” is Are we making a difference to the problem or not?
Efficiency, effectiveness, impact	Efficiency tells you that the input into the work is appropriate in terms of the output. This could be input in terms of money, time, staff, equipment and so on. Effectiveness is a measure of the extent to which a development programme or project achieves the specific objectives it set. Impact tells you whether or not what you did made a difference to the problem situation you were trying to address. In other words, was your strategy useful?
Gini distribution of income	The difference between the top end and bottom end of the economic scale in a society.
Go to scale	Take a project from dealing with small numbers of beneficiaries to dealing with large numbers of beneficiaries.
Indicators	Indicators are a measurable or tangible sign that something has been done. So, for example, an increase in the number of students passing is an indicator of an improved culture of learning and teaching. The means of verification (proof) is the officially published list of passes.
Opportunity costs	Opportunity costs are the opportunities you give up when you decide to do one thing rather than another. For example, If you spend your money upgrading

# Monitoring and Evaluation

teachers, you give up the opportunity of using the money to buy more text books. You have to decide which is the better use of the money.

## Outputs

Outputs here usually include a draft written report, a verbal presentation, a final written report in hard copy and electronic form (specifying programme compatibility). They can also include interim reports, interview schedules that must be signed off by the client and so on.

## Progress data

This is data (information) that you get during the monitoring of the progress of the project.

## Qualitative

Qualitative data or information deals with how people feel about something, opinions, experiences, rather than with numbers (quantitative data).

## Rigorous

Disciplined, thorough and done with honesty and integrity.

## Sampling

Sampling is a way of selecting who to speak to, who to interview, who to survey when you are doing an evaluation, and cannot cover all the cases that exist.

## Secondary data

Secondary data is information that already exists, collected by other people, organisations. If it comes from your own organisation it is primary data. Primary data is information collected by you – from other project stakeholders, the general population, your own observation and so on.

## Structured, semi-structured or unstructured interviews

Structured interviews follow a fixed set of questions, unstructured interviews do not have any pre-prepared questions and semi-structured combine structured and unstructured, with the interviewer asking some set questions but adding others in order to follow a line of inquiry that comes up.

## SWOT Analysis

Analysis of Strengths, Weaknesses, Opportunities and Threats. Dealt with in detail in the toolkit: Overview of Planning.

## Terms of Reference

Terms of Reference form the basis on which you ask for proposals and against which you assess what you are getting. They should include: some background to the project and/or organisation, what the purpose of the



# Monitoring and Evaluation

evaluation is (why you want it done), the key evaluation questions you want answered, the specific aspects you want included (although this should be open to negotiation), the kinds of methodologies you have in mind (again, open to negotiation), the outputs you expect, the time frame for both submission of proposals and for doing the evaluation.

## Triangulation

Triangulation is a way of confirming data by using several sources to reflect on/measure the same thing. For example, if the teachers, learners and parents in a school all praise the principal for being open-minded, this information is more likely to be acceptable in an evaluation than if only the teachers said so.

## Variables

A variable is a changing element of the situation which may or may not affect efficiency, effectiveness and/or impact, and which you want to be able to link to other variables in your indicators. Income level of parents in a school is a variable, so is location in terms of rural/urban.